

Ultima3

5.8 GHz Broadband Wireless System

The Ultima3 Series is a family of broadband wireless solutions designed for service providers and enterprise connectivity applications. Available in three flexible configurations, Ultima3 is guaranteed to provide unprecedented ease of deployment, simplicity of operation and the most comprehensive range of features available.

Multi-Point (MP)

From a single Access Point (AP), the Ultima3 MP solution provides broadband wireless coverage up to 24 miles (38 Km).

Supporting up to 1,000 subscriber sites and offering bandwidth management features such as CIR and MBR, the Ultima3 MP delivers the flexibility to grow with your business.

Rapid Deployment (RD)

When you need a link fast (or a fast link), the Ultima3 RD is your best choice. Truly the easiest point-to-point system available today, the Ultima3 features a lightweight one-piece design that enables quick installation and exceptional performance for links up to 16 miles (25 Km).

Extended Range (ER)

Stretch beyond the limits with the Ultima3 ER. Extend point-to-point wireless links up to 45 miles (72 Km). Choose the required range by simply selecting the appropriate antenna.

Proven Technology

Built on eight years of field-proven patented MC-DSSS (Multi-Code Direct Sequence Spread Spectrum) wireless technology, Ultima3 is the only second generation 5.8 GHz system in the market.

Scalable

Ultima3 combined with a comprehensive range of antennas allows flexible network growth. Start with a single omni antenna at the base station, divide into a sectored cell and ultimately expand to multiple cells to satisfy network growth requirements.



Ultima3 CPE



Ultima3 AP

Easy to Use

A rugged, weatherproof design eliminates bulky coax cable and accessories while allowing the Ultima3 to be mounted in an outdoor environment. A standard off-the-shelf alignment tool makes installation and link setup fast and easy. Ultima3 Web GUI, SNMP and cloning capabilities allow for network operation and maintenance from anywhere in the network.

Secure

The Ultima3 is inherently secure due to its DSSS radio. Patented MC-DSSS technology further enhances security with physical layer data scrambling, proprietary data formatting and special access passwords. Together with RF Grouping, IP Filtering and VLAN, this multi-layer security approach makes Ultima3 the safe choice for high security applications.

Robust

The Ultima3 constantly monitors, and automatically adjusts, its output power, seamlessly responding to changes in the operating environment. Optimizing the RF power minimizes interference while allowing maximum frequency reuse, provides a hassle-free way to establish and guarantee wireless network service levels.

Sagaxis Inc.

155 Champagne Drive, Suite 7, Toronto, Ontario, Canada M3J 2C6

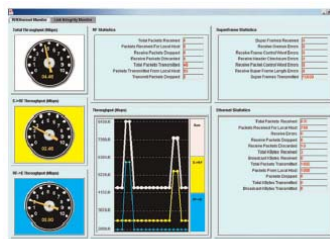
Tel: + 1 (416) 693-7108

Fax: + 1 (416) 385-1610

info@sagaxis.com

www.sagaxis.com

Technical Specifications			
Radio Specifications	Ultima3 RD (Rapid Deployment)	Ultima3 ER (Extended Range)	Ultima3 MP (Multi-Point)
Output Power	-10 dBm to +21 dBm	-10 dBm to +21 dBm	-10 dBm to +21 dBm
Frequency Range	5.725 to 5.850 GHz	5.725 to 5.850 GHz	5.725 to 5.850 GHz
Receive Sensitivity	-80 dBm @ BER = 10 ⁻⁶	-80 dBm @ BER = 10 ⁻⁶	-80 dBm @ BER = 10 ⁻⁶
RF Technology	MC-DSSS	MC-DSSS	MC-DSSS
Wireless Data Rate Range	12 Mbps (10 Mbps effective) Up to 16 miles (25 Km)	12 Mbps (10 Mbps effective) Up to 45 miles (72 Km)	12 Mbps (10 Mbps effective) Up to 24 miles (38 Km)
Antenna Connector	-	N-Female	AP/LCPE: N-Female
Integrated Antenna	23 dBi	-	CPE: 23 dBi
Certification	FCC & IC	FCC & IC	FCC & IC
Network Support			
Network Interface	10/100 BaseT	10/100 BaseT	10/100 BaseT
VLAN (802.1q)	Yes	Yes	Yes
Wireless Networking			
Network Topology	Point-to-Point	Point-to-Point	Point-to-Multipoint
RF Collision Management	Polling with Dynamic Time Allocation (DTA)	Polling with Dynamic Time Allocation (DTA)	Polling with Dynamic Time Allocation (DTA)
Number of CPE per AP	-	-	1,000
Quality of Service	-	-	CIR/MBR
Security			
Data Scrambling	User Configurable to 4 x 10 ⁹	User Configurable to 4 x 10 ⁹	User Configurable to 4 x 10 ⁹
Data Security Password	20-byte Security password	20-byte Security password	20-byte Security password
Management			
Remote Management	SNMP, Telnet, Web GUI	SNMP, Telnet, Web GUI	SNMP, Telnet, Web GUI
Management Port	RS 232 Serial Port	RS 232 Serial Port	RS 232 Serial Port
Physical Characteristics			
Power Consumption	14 W (max)	14 W (max)	14 W (max)
Dimensions	12" x 3.5" x 12" 30.5 x 8.9 x 30.5 cm	7.5" x 3.0" x 9.0" 19.1 x 7.6 x 22.9 cm	AP: 7.5" x 3.0" x 9.0" CPE: 12.0" x 3.5" x 12.0" LCPE: 7.5" x 3.0" x 9.0" AP/LCPE: 6.6 lb (3.0 Kg) CPE: 7.92 lb (3.6 Kg)
Weight	7.92 lb (3.6 Kg)	6.6 lb (3.0 Kg)	-40° C to 60° C
Operating Temperature Enclosure	-40° C to 60° C Fully weatherproof	-40° C to 60° C Fully weatherproof	-40° C to 60° C Fully weatherproof



Web-based GUI

Specifications subject to change without notice.

Sagaxis Inc.

155 Champagne Drive, Suite 7, Toronto, Ontario, Canada M3J 2C6

Tel: + 1 (416) 693-7108

Fax: + 1 (416) 385-1610

info@sagaxis.com

www.sagaxis.com